



PRODUCT INFORMATION

Thermo Scientific

GeneRuler 100 bp DNA Ladder

Pub. No. MAN0012995

Rev. Date 12 February 2018 (Rev. C.00)

Components	#SM0241	#SM0242
GeneRuler 100 bp DNA Ladder, 0.5 µg/µL	50 µg (for 100 applications)	250 (5 x 50) µg (for 500 applications)
6X TriTrack DNA Loading Dye	1 mL	2 × 1 mL

Store at -25°C to -15°C

www.thermofisher.com

For Research Use Only. Not for use in diagnostic procedures.

Description

Thermo Scientific™ GeneRuler™ 100 bp DNA Ladder is designed for sizing and approximate quantification of wide range double-stranded DNA on agarose and polyacrylamide gels. The ladder is composed of ten chromatography-purified individual DNA fragments (in base pairs): 1000, 900, 800, 700, 600, **500**, 400, 300, 200, 100. It contains one reference band (500 bp) for easy orientation.

The ladder is dissolved in TE buffer.

Storage Buffer

10 mM Tris-HCl (pH 7.6), 1 mM EDTA.

6X TriTrack DNA Loading Dye

10 mM Tris-HCl (pH 7.6), 0.03% bromophenol blue, 0.03% xylene cyanol FF, 0.15% orange G, 60% glycerol and 60 mM EDTA.

Protocol for Loading

Loading mixture for the 5 mm gel lane*:

Components	Gels	
	Agarose	Polyacrylamide
DNA ladder (0.5-1 µg)	1-2 µL	1-2 µL
6X TriTrack DNA Loading Dye	1 µL	0.5 µL
Deionized water	4-3 µL	1.5-0.5 µL
	6 µL	3 µL

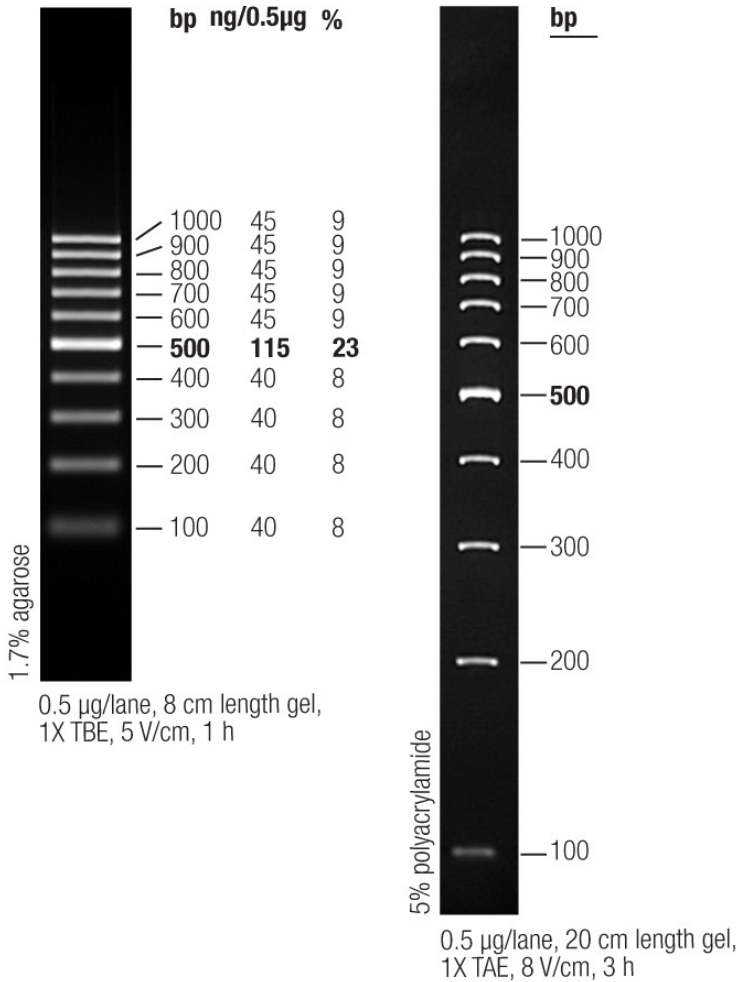
- Step 1:** Mix gently
Step 2: Load on the gel

*For gels with other lane widths, the components of the mixture should be scaled either up or down. Use 0.2-0.4 µL (0.1-0.2 µg) of DNA ladder per 1 mm of lane.

Recommendations

- Do not heat before loading.
- Dilute your DNA sample with the 6X TriTrack DNA Loading Dye (#R1161, supplied with the ladder): mix 1 volume of the dye solution with 5 volumes of the DNA sample;
- Load the same volumes of the DNA sample and the DNA ladder;
- For quantification, adjust the concentration of the sample to equalize it approximately with the amount of DNA in the nearest band of the ladder.
- For DNA band visualization with SYBR™ Green and other intercalating dyes, do not add the dyes into the sample, use gel staining after electrophoresis or include dyes into agarose gel to avoid aberrant DNA migration.
- **Important note:** For DNA bands visualization with GelRed™ use gel staining after electrophoresis to avoid aberrant DNA migration.

GeneRuler 100 bp DNA Ladder



LIMITED USE LABEL LICENSE: Internal Research and Development Use Only.

The purchase of this product conveys to the buyer the limited, non-exclusive, non-transferable right (without the right to resell, repackaging, or further sublicense) to use this product for internal research and development purposes. No other license is granted to the buyer whether expressly, by implication, by estoppel or otherwise. In particular, the purchase of the product does not include or carry any right or license to use, develop, or otherwise exploit this product commercially and no rights are conveyed to the buyer to use the product or components of the product for purposes including but not limited to provision of services to a third party, generation of commercial databases or clinical diagnostics. This product is sold pursuant to authorization from Thermo Fisher Scientific and Thermo Fisher Scientific reserves all other rights. For information on purchasing a license for uses other than internal research and development purposes, please contact outlicensing@lifetech.com or Out Licensing, Life Technologies Inc., 5781 Van Allen Way, Carlsbad, California 92008.

PRODUCT USE LIMITATION

This product is developed, designed and sold exclusively *for research purposes and in vitro use only*. The product was not tested for use in diagnostics or for drug development, nor is it suitable for administration to humans or animals.

Please refer to www.thermofisher.com for Material Safety Data Sheet of the product.

© 2018 Thermo Fisher Scientific Inc. All rights reserved. All trademarks are the property of Thermo Fisher Scientific Inc. and its subsidiaries.